

Social sciences and humanities – how to be involved and support interdisciplinarity in Horizon Europe

Mikołaj Pyczak
Net4SocietyHE
Cluster 2 NCP Poland

Webinar: Navigating Horizon Europe: Social Sciences and Humanities perspectives from Baltics and beyond

Policy background

“The Programme should support R&I activities in the field of social sciences and humanities (SSH). This entails advancing scientific knowledge in that domain and **making use of insights and progress from SSH to increase economic and societal impact of the Programme**”

Horizon Europe Regulation, Para. 14, L 170/3

“Horizon Europe shall ensure a **multidisciplinary approach** and shall foresee, where appropriate, **the integration of social sciences and humanities across all clusters and activities** developed under the Programme, **including specific calls on SSH related topics**”

Horizon Europe Regulation, Art. 7 “Principles of the Problem”, para. 2

“The **effective integration of social sciences and humanities (SSH) in all clusters**, including all missions and **partnerships**, is a principle through the Programme cycle. **SSH are a key constituent of research and innovation**, especially regarding the twin green and digital”

Horizon Europe Strategic Plan 2021-24

SSH integration – what and why?

What?

- A **technical term** of the European Commission referring to the doing of **inter-/multi-/transdisciplinary research**
- Refers to heterogeneous groups of actors (i.e. researchers) stemming from **different disciplines** within the **social sciences and humanities (“SSH”)**
- Differing **thematic specialties** and **methodological approaches**

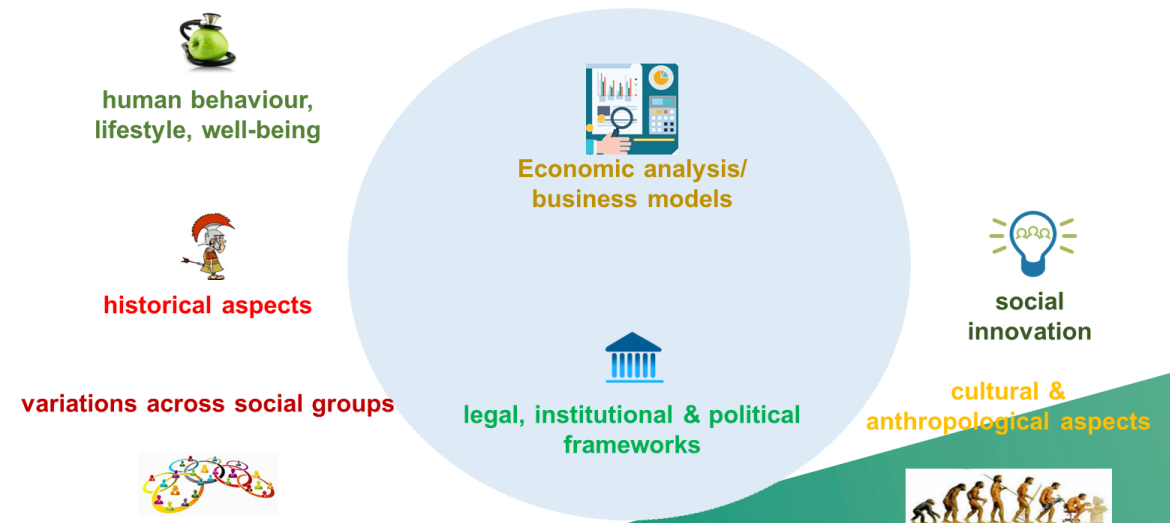
Why?

- Need for **“human centric”** focus in all research areas
- Develop **better solutions to complex problems** facing Europe/the world (**technical solutions are not enough!**)
- Develop solutions with **clear social relevance**, cost effectiveness, and marketability
- Integration of SSH disciplines in R&I projects leads to **stronger societal impact broader/better citizen engagement**

SSH in Horizon Europe



SSH aspects in Horizon Europe



Why include SSH in a proposal?

- European Commission **explicitly calls on SSH experts** to contribute to framing the questions and issues to be tackled in Horizon Europe
- Topics are **'flagged' for SSH** by European Commission, i.e. they **point to SSH research as integral part of the expertise needed** to properly address the issue outlined in the topic
- Proposals submitted for topics 'flagged' for SSH should contain **meaningful, integrated contributions from SSH researchers**
- Depending on the topic: **indispensable** for understanding the challenge to be addressed
- SSH perspectives can lead to **new findings, approaches, and solutions**
- Improved application/use of project results: complex social problems require socially acceptable solutions and products
- **Better chances** during evaluation (for SSH relevant topics)

Flagging SSH research in Horizon Europe

- Main instrument used by the European Commission to ensure involvement of specific SSH research methods, competencies, and skills in funded research projects
- Flagging in all **non-Cluster 2 clusters** and missions
- **Specific terminology** (i.e. words and phrases) used to identify SSH research /researcher / expert involvement
- Usage of a standard sentence for all SSH flagged topics (**scope** section), starting with **WP 2023-24 (Clusters 1, 3, 4, 5, 6)**

“This topic requires the effective contribution of SSH disciplines and the involvement of SSH experts, institutions as well as the inclusion of relevant SSH expertise, in order to produce meaningful and significant effects enhancing the societal impact of the related research activities.”

Where to look? F&T Portal

Submission status

Forthcoming Open for submission (6) Closed

Programming period

2021 - 2027 (6) x v

Horizon Europe (HORIZON) x

Programme part

Select a Programme part...

Mission

Mission: Soil health and food (6) x v

Destination

Select a Destination...

Quick search on specific priorities

Socio-economic science and humanities (6) x v

Type of action	HORIZON Research and Innovation Actions	Deadline model	single-stage
Opening date	12 May 2022	Deadline date	27 September 2022 17:00:00 Brussels time

Network on carbon farming for agricultural and forest soils [Call for proposal](#) [Grant](#)
HORIZON-MISS-2022-SOIL-01-06

Programme	Horizon Europe (HORIZON)	Status	Open for submission
Type of action	HORIZON Coordination and Support Actions	Deadline model	single-stage
Opening date	12 May 2022	Deadline date	27 September 2022 17:00:00 Brussels time

Foster soil education across society [Call for proposal](#) [Grant](#)
HORIZON-MISS-2022-SOIL-01-07

Programme	Horizon Europe (HORIZON)	Status	Open for submission
Type of action	HORIZON Research and Innovation Actions	Deadline model	single-stage
Opening date	12 May 2022	Deadline date	27 September 2022 17:00:00 Brussels time

Citizen science for soil health [Call for proposal](#) [Grant](#)
HORIZON-MISS-2022-SOIL-01-09

Programme	Horizon Europe (HORIZON)	Status	Open for submission
Type of action	HORIZON Research and Innovation Actions	Deadline model	single-stage
Opening date	12 May 2022	Deadline date	27 September 2022 17:00:00 Brussels time

Where to look for SSH partners? F&T Portal

SEARCH FUNDING & TENDERS ▾ HOW TO PARTICIPATE ▾ PROJECTS & RESULTS WORK AS AN EXPERT SUPPORT ▾

Partner search

Organisations Persons [Advanced search ^](#)

Programme / Topic

Programme ▾ Topic ▾

Location

Country ▾ City ⓘ

Organisation

Organisation type ▾

Person profile

Professional profile ▾

Profiles with published Partner search announcements (8892)

Where to look for SSH partners? Brokerage meetings



<https://horizoneuropencpportal.eu/>

Click “STAGE” button on the website and learn about more upcoming networking opportunities



Cluster 5 BROKERAGE EVENT

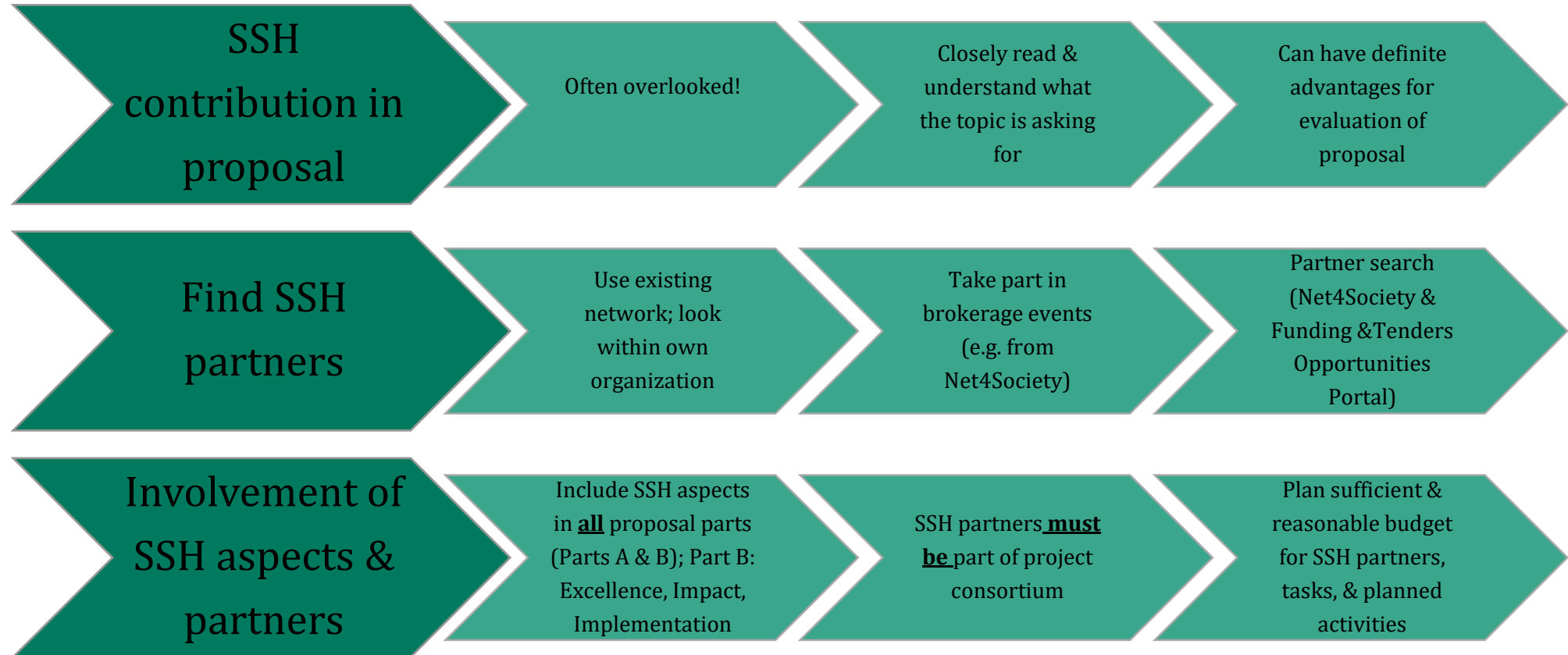
18th October 2023, online

HORIZON EUROPE

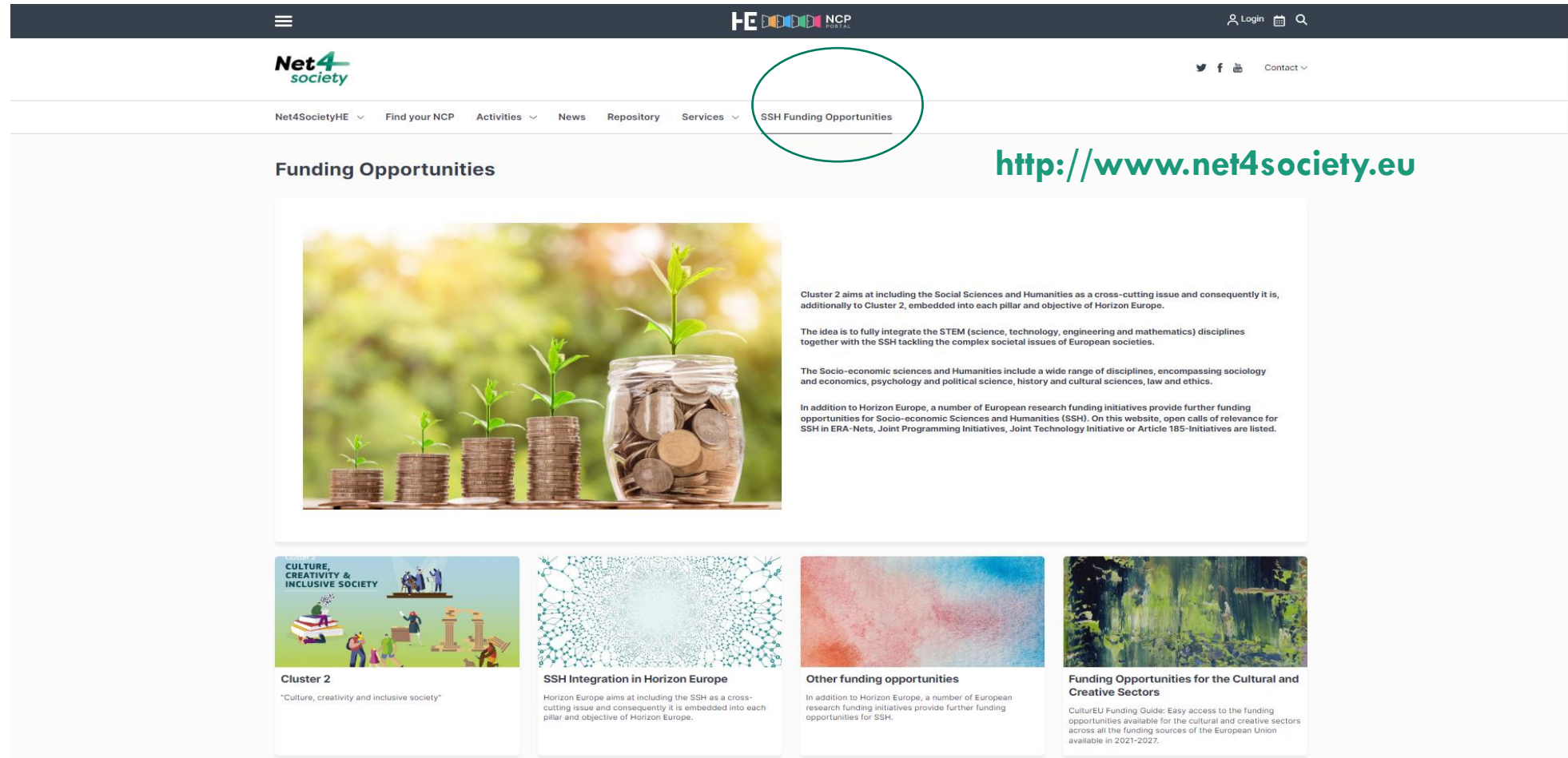
Horizon Europe CLUSTER 5 calls for proposals 2024



SSH Integration: practical tips (summary)



Useful tools – Net4SocietyHE Portal



The screenshot shows the Net4SocietyHE Portal website. The top navigation bar includes a menu icon, the HE NCP PORTAL logo, and a search icon. The main navigation menu lists: Net4SocietyHE, Find your NCP, Activities, News, Repository, Services, and SSH Funding Opportunities (circled in green). The URL <http://www.net4society.eu> is displayed in green text. The main content area is titled 'Funding Opportunities' and features a large image of a glass jar filled with coins and a small plant growing from it. Below this image is a text block explaining the integration of SSH in Horizon Europe. At the bottom, there are four smaller cards: 'Cluster 2: Culture, Creativity & Inclusive Society', 'SSH Integration in Horizon Europe', 'Other funding opportunities', and 'Funding Opportunities for the Cultural and Creative Sectors'.


HE NCP PORTAL

Net4society

Net4SocietyHE Find your NCP Activities News Repository Services SSH Funding Opportunities

http://www.net4society.eu

Funding Opportunities



Cluster 2 aims at including the Social Sciences and Humanities as a cross-cutting issue and consequently it is, additionally to Cluster 2, embedded into each pillar and objective of Horizon Europe.

The idea is to fully integrate the STEM (science, technology, engineering and mathematics) disciplines together with the SSH tackling the complex societal issues of European societies.

The Socio-economic sciences and Humanities include a wide range of disciplines, encompassing sociology and economics, psychology and political science, history and cultural sciences, law and ethics.

In addition to Horizon Europe, a number of European research funding initiatives provide further funding opportunities for Socio-economic Sciences and Humanities (SSH). On this website, open calls of relevance for SSH in ERA-Nets, Joint Programming Initiatives, Joint Technology Initiative or Article 185-Initiatives are listed.

Cluster 2 CULTURE, CREATIVITY & INCLUSIVE SOCIETY

Cluster 2
"Culture, creativity and inclusive society"

SSH Integration in Horizon Europe

Horizon Europe aims at including the SSH as a cross-cutting issue and consequently it is embedded into each pillar and objective of Horizon Europe.

Other funding opportunities

In addition to Horizon Europe, a number of European research funding initiatives provide further funding opportunities for SSH.

Funding Opportunities for the Cultural and Creative Sectors

CulturEU Funding Guide: Easy access to the funding opportunities available for the cultural and creative sectors across all the funding sources of the European Union available in 2021-2027.

Useful tools – *SSH Opportunities* document

“Opportunities for Researchers from the Socio-economic Sciences and Humanities (SSH) in Horizon Europe”

- **Overview** of SSH funding chances in Horizon Europe Programme (all Clusters & some other programming areas)
- Goes **beyond** European Commission flagged topics
- **3 categories: dedicated** topics, **relevant** topics, topics with **minor SSH relevance**
- Published regularly during project runtime
- **Current version:** Q1 2023



Useful tools – SSH Opportunities document

Call - Biodiversity and ecosystem services

Deadline: 22 February 2024

Topic	SSH aspects
HORIZON-CL6-2024-BIODIV-01-1 Invasive alien species Link	Proposals are expected to support and improve public awareness, literacy and engagement, on invasive alien species monitoring and management. This topic should involve contributions from the social sciences and humanities disciplines. Main keywords: Social Sciences and Humanities
HORIZON-CL6-2024-BIODIV-01-4 Biodiversity, economics and finance: Understanding macro-financial risks associated with biodiversity loss Link	Proposal(s) will help unlock financial flows needed for reversing biodiversity loss, and contribute to mainstreaming biodiversity, ecosystem services and natural capital in the society and economy. Actions are expected to involve and co-create with the end-users (financial institutions, non-financial corporations, governments etc.) to fully account for their respective views and needs. Actions should bring together from the start multiple types of scientific expertise in socialsciences and humanities, in particular in economics and finance, as well as scientific expertise in biodiversity and natural capital. Main keywords: Economics, Finance
HORIZON-CL6-2024-BIODIV-01-5 Transformative action of policy mixes, governance and digitalisation addressing biodiversity loss Link	Proposals will develop operational knowledge and understanding of transformative change needed to address the indirect drivers of biodiversity loss underpinned by societal values and behaviours, which is available to, and used by policy makers. Proposals will also improve and innovative governance tools and policy mixes that can effectively initiate, accelerate and upscale such biodiversity-relevant transformative changes in our society. This topic should involve contributions from the social sciences and humanities disciplines, as well as social innovation. Main keywords: Social and Behavioural studies, Social innovation, Demography, Political Science, Economics
HORIZON-CL6-2024-BIODIV-01-7 Reintroduction of landscape features in intensive agricultural areas Link	Proposals should address the valuation (monetary and social benefits) of the ecosystem services of landscape features, based on existing R&I projects, and assess the perception of land managers/owners of this value increase. This topic should involve the effective contribution of social sciences and humanities (SSH) disciplines. Main keywords: Economics, Sociology

Call - Land, ocean and water for climate action

Deadline: 22 February 2024

Topic	SSH aspects
HORIZON-CL6-2024-CLIMATE-01-2 Socio-economic, climate and environmental aspects of paludiculture Link	Proposals should take stock of the main socio-economic variables relevant for the paludiculture sector, including options for marketing of its products, and carry out socio-economic analyses, including projections and foresight. This topic should involve the effective contribution of SSH disciplines. Main keywords: Sociology, Economics, Marketing
HORIZON-CL6-2024-CLIMATE-01-5 Climate-smart use of wood in the construction sector to support the New European Bauhaus Link	Proposals will analyse and propose systems to overcome technical, logistical, legal, business, political, economic, knowledge and social barriers, challenges and opportunities and derive integrated policy recommendations and business strategies for enlarging the wood construction sector in Europe. This topic should involve the effective contribution of SSH disciplines and capitalise on previous research results. Main keywords: Law, Business, Political Science, Economics, Social studies

Call - Resilient, inclusive, healthy and green rural, coastal and urban communities

Deadline: 22 February 2024

Topic	SSH aspects
HORIZON-CL6-2024-COMMUNITIES-01-1 Unlock the potential of the New European Bauhaus in urban food system transformation Link	Proposals must implement the 'multi-actor approach' and ensure adequate involvement of citizens and civil society, together with urban designers, design thinkers, social innovators, start-ups, planners, social scientists and public authorities to strengthen relationships between urban planning and food choices and to develop new methods and approaches to innovation. Main keywords: Social studies, Social innovation, Human Geography, Arts
HORIZON-CL6-2024-COMMUNITIES-01-2 Societal perceptions and benefits of rural life and jobs: will COVID 19 generate a long-lasting shift? Link	Projects funded under this topic are expected to undertake sociological, behavioural, social psychology, social science, history, geographical, cultural, gender, economic studies on societal perception of rural areas and rural lifestyles. This topic should involve the effective contribution of social science and humanities (SSH) disciplines (e.g., sociology, history, human geography, behavioural sciences, gender studies, etc.). Main keywords: Sociology, Behavioural studies, Psychology, History, Human Geography, Economics, Cultural Studies, Gender Studies
HORIZON-CL6-2024-COMMUNITIES-01-3 Participation and empowerment of Arctic coastal, local, and indigenous communities in environmental decision-making Link	Projects should include representation from multiple disciplines of research, including environmental, marine, social, cultural, health, design. This topic is expected to involve the effective contribution of SSH disciplines. Main keywords: Social and Cultural Studies, Arts

Factsheets* on SSH Integration good practices

Good practice: examples from successful inter and multidisciplinary projects (project design & carry out):

- Based on interviews with project coordinators different flagged topics
- Focus on the **nature** (the “how”) of SSH researchers’ inclusion in the projects



Useful tools – *SHAPE-ID* toolkit

Tips, guidelines, examples on how to carry out interdisciplinary research

Designed for use by:

- Researchers
- Research organizations
- Research funders/policymakers
- Societal partners (e.g. artists/creative practitioners, CSOs, NGOs, non profits)

<https://www.shapeidtoolkit.eu/>

Learn more using the *SHAPE-ID* Toolkit:



Guided Pathways



Top Ten Tips



Case Studies



Downloadable Guides



FAQ



Guided Tours

Stay informed & contact us



Contact the coordination team

contact@net4society.eu

Website:

www.net4society.eu