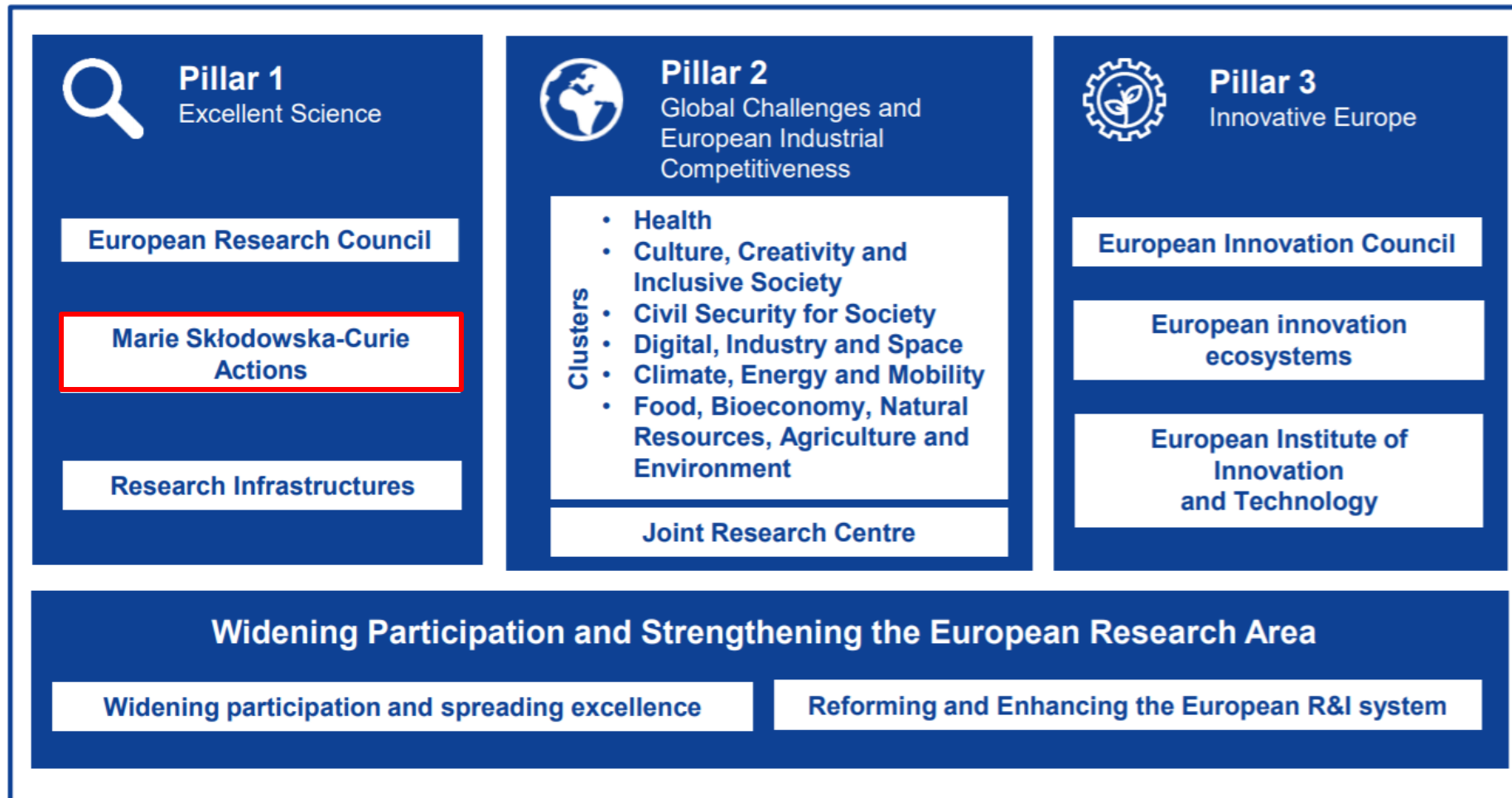


Marie Skłodowska-Curie Postdoctoral Fellowships

Kristin Kraav

Horizon Europe



MSCA Actions

1. MSCA Doctoral Networks	→ <i>networks training doctoral candidates</i>
2. MSCA Postdoctoral Fellowships	→ <i>postdoctoral researchers</i>
3. MSCA Staff Exchanges	→ <i>any type of research(-related) staff</i>
4. MSCA COFUND	→ <i>co-funding training programmes</i>
5. MSCA and Citizens	→ <i>public outreach events</i>

MSCA key features

- **Support the training and career development** of researchers from **all over the world** through excellent doctorates, postdoctoral fellowships and collaborative projects
- Stimulating **international, inter-sectoral and interdisciplinary** cooperation. Participation of **non-academic sector**, especially industry and SMEs
- For researchers at **every stage** of their career
- Support excellent research in all domains (**bottom-up approach**)
- Promotion of **attractive working and employment** conditions (financing rate of up to 100% based on **unit costs**)
- Impacting **researcher careers, organisations, structures**



Researchers' training, skills and career development (all stages of career)



Excellent research in all domains (bottom-up approach)



International, cross-sectoral & interdisciplinary mobility



Attractive working and employment conditions



Structuring impact on organisations through excellent programmes

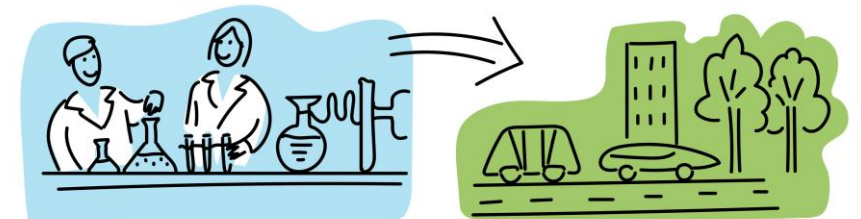


Strong collaboration with industry and SMEs

MSCA postdoctoral fellowships

Postdoctoral fellowships include:

- Carrying out a research project
- Skills development (both scientific and transferable)
- Dissemination of research results and communication activities targeted at general population
- Developing connections with the non-academic sector
- Physical mobility to another country



Types of the MSCA postdoctoral fellowships

European Fellowships:

- For coming to Europe* from any country in the world or moving within Europe
- Duration 12-24 months

Global Fellowships:

- For going outside EU Member States and Horizon Europe AC
- Duration 24-36 months (12-24 outgoing phase & 12 months mandatory return phase in Europe)

Optional ***secondments*** worldwide up to 1/3 of the fellowship duration (or outgoing phase of GF)

Optional additional ***placement*** of **up to 6 months in a non-academic** European organization at the end of the regular duration of the Fellowship

EUROPEAN FELLOWSHIP TARGET COUNTRIES

A map of Europe and its surrounding regions. Countries highlighted in blue represent target countries for the European Fellowship. Countries in grey represent non-target countries. The blue countries include the 27 EU member states, Norway, Serbia, Turkey, Albania, Faeroe Islands, Tunisia, Ukraine, UK, and Morocco. Grey countries include Iceland, Israel, Kosovo, Moldova, Montenegro, North Macedonia, and others in the Balkans, Eastern Europe, and North Africa.

EU 27

- + Associated countries*:
- Armenia
 - Bosnia-Herzegovina
 - Georgia
 - Iceland
 - Israel
 - Kosovo
 - Moldova
 - Montenegro
 - North Macedonia
 - Norway
 - Serbia
 - Turkey
 - Albania
 - Faeroe Islands
 - Tunisia
 - Ukraine
 - UK
 - Morocco*

Applicants of MSCA postdoctoral fellowships

The proposal is submitted by the researcher in cooperation with the European Host **organisation** (*beneficiary*):

- There are no limitations to organisation type, but it must provide supervision and conditions for carrying out the research project
- In case of Global Fellowships, the Host organisation located outside Europe is an *associated partner* in the project and must submit a letter of commitment with the project

Researcher (postdoctoral fellow):

- Can be of **any nationality** (Global Fellowships: nationals or long term residents of MS or HE AC)
- in possession of **PhD** at the call deadline
- **up to 8 years** research experience after PhD (with exceptions: career breaks, work outside research, research outside Europe for reintegrating researchers,...)
- **mobility rule**: not resided / had main activity in the country of the beneficiary (or host organization for GF) more than 12 months in the 36 months before call deadline

MSCA postdoctoral fellowships Funding



Contributions for recruited researchers Per person-month					Institutional unit contributions Per person-month	
Living allowance	Mobility allowance	Family allowance (if applicable)	Long-term leave allowance (if applicable)	Special needs allowance (if applicable)	Research, training and networking contribution	Management and indirect contribution
EUR 5990	EUR 710	EUR 660	EUR 6700 x % covered by the beneficiary	Requested unit ¹ x (1/number of months)	EUR 1 000	EUR 650

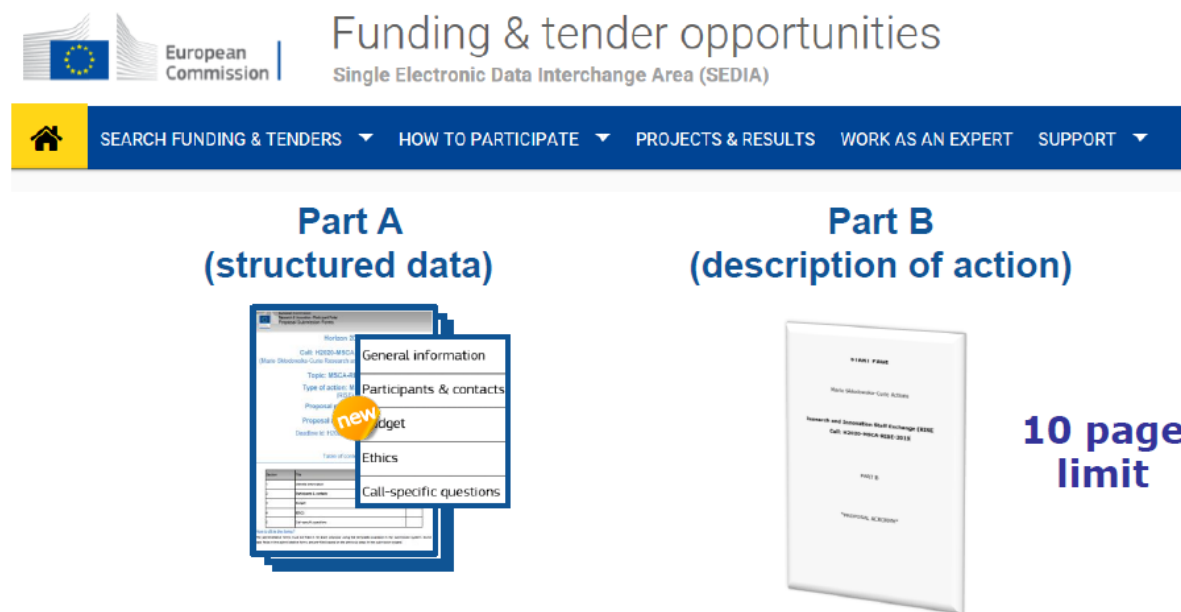
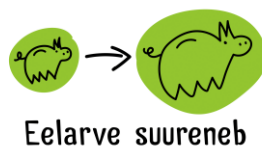
- Country coefficient will apply to the Living allowance
- CC for Estonia: **92,7 %** (living allowance: **5552,73 €/month**)

Evaluation criteria

Excellence	Impact	Quality and efficiency of the implementation
<p>Quality and pertinence of the project's research and innovation objectives (and the extent to which they are ambitious, and go beyond the state of the art)</p>	<p>Credibility of the measures to enhance the career perspectives and employability of the researcher and contribution to his/her skills development</p>	<p>Quality and effectiveness of the work plan, assessment of risks and appropriateness of the effort assigned to work packages</p>
<p>Soundness of the proposed methodology (including interdisciplinary approaches, consideration of the gender dimension and other diversity aspects if relevant for the research project, and the quality of open science practices)</p>	<p>Suitability and quality of the measures to maximise expected outcomes and impacts, as set out in the dissemination and exploitation plan, including communication activities</p>	<p>Quality and capacity of the host institutions and participating organisations, including hosting arrangements</p>
<p>Quality of the supervision, training and of the two-way transfer of knowledge between the researcher and the host</p>	<p>The magnitude and importance of the project's contribution to the expected scientific, societal and economic impacts</p>	
<p>Quality and appropriateness of the researcher's professional experience, competences and skills</p>		
<p>50%</p>	<p>30%</p>	<p>20%</p>

Applying for MSCA postdoctoral fellowships

- Call for proposals will open on 10 April (NB! probable delay); deadline for submitting proposals is on **11 September 2024**
- Budget of the call:
 - EF 230.14 M€
 - GF 40.61 M€
- Application via the Funding and Tenders portal



The screenshot shows the European Commission's 'Funding & tender opportunities' portal. The header includes the European Commission logo and the text 'Single Electronic Data Interchange Area (SEDIA)'. A navigation bar contains links for 'SEARCH FUNDING & TENDERS', 'HOW TO PARTICIPATE', 'PROJECTS & RESULTS', 'WORK AS AN EXPERT', and 'SUPPORT'. Below the navigation bar, two main sections are highlighted: 'Part A (structured data)' and 'Part B (description of action)'. Part A is represented by a stack of documents with a 'new' badge, listing categories like 'General information', 'Participants & contacts', 'Budget', 'Ethics', and 'Call-specific questions'. Part B is represented by a document cover with the text 'PART B: Research and Innovation Staff Exchange (RISE) Call: HORIZON-RISE-2024'. To the right of Part B, the text '10 page limit' is displayed.

Proposal for MSCA postdoctoral fellowships

Part A administrative forms are filled on-line:

- General information
 - Title, scientific area, keywords, abstract, declarations
- Information on participants
 - Beneficiary, supervisor, researcher
- Budget (is generated automatically)
- Ethics and Security
- Other questions

Part B of the proposal consists of two PDF documents:

- *Document 1 – max 10 pages*
 1. EXCELLENCE: research, training, supervision, researcher
 2. IMPACT: impact on career; scientific, economic, societal impact; dissemination and communication
 3. IMPLEMENTATION: work plan, infrastructures
- *Document 2 – no overall page limit*
 4. CV OF THE RESEARCHER *5 p (indicative)*
 5. CAPACITIES OF THE PARTICIPATING ORGANISATIONS *max 1 p for beneficiary and max ½ p for associated partner*
 6. ADDITIONAL ETHICS INFORMATION
 7. ADDITIONAL INFORMATION ON SECURITY SCREENING
 8. ENVIRONMENTAL CONSIDERATIONS (GREEN CHARTER)
 9. LETTER OF COMMITMENT: *only for Global Fellowship*

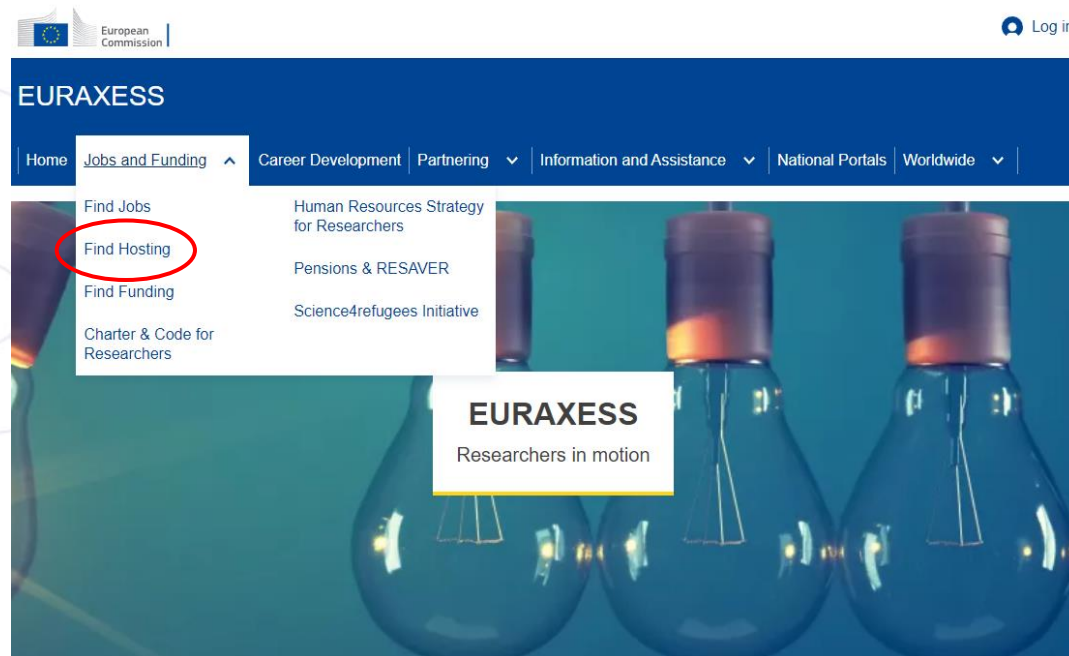
https://ec.europa.eu/info/funding-tenders/opportunities/docs/2021-2027/horizon/temp-form/af/af_he-msca-pf_en.pdf

Useful materials

- Official documents (in the F&T portal):
 - [Work Programme](#)
 - [Proposal template with explanations](#)
 - FAQ for the 2023 PF call
 - [Model Grant Agreement](#)
 - [HE programme guide](#)
- Official documents on [REA website](#):
 - [Guide for Applicants](#) for the 2023 PF call
 - Instructions how to calculate the 8 years from PhD
- Official documents on [EC MSCA website](#):
 - [MSCA Guidelines on supervision](#)
 - [MSCA Green Charter](#)
- Materials elsewhere:
 - Materials from the MSCA-NET project:
 - [MSCA-NET FAQ](#)
 - [MSCA-NET PF materials](#)

How to find a Host

- EURAXESS Jobs portal
 - <https://euraxess.ec.europa.eu/>



- MSCA matchmaking platform:
 - <https://msca.b2match.io/>



MSCA PF success rates

- **European Fellowships:**

- 2021: 13,83 %
- 2022: 17,52 %
- 2023: 15,71 %

- **Global Fellowships:**

- 2021: 16,80 %
- 2022: 16,52 %
- 2023: 16,82 %

ERA Fellowships

- **Aim:** to combat brain drain and support researchers to undertake their fellowship in a **Widening country** (including Estonia)
- All **non-funded MSCA European Fellowship** applications that pass all evaluation thresholds (70%) will be automatically passed on to the ERA Fellowships call (*NB! no applications can be submitted directly to this call*) funded from the Widening participation part of Horizon Europe
- A single multidisciplinary ranking list will be formed; ca. 35 top-ranking proposals will be funded
- Conditions of the MSCA PF will apply (same funding, same Grant Agreement)
- **Budget:** 8 M€ in 2024

Mobilitas 3.0 incoming postdoctoral grant

- ETAG funds incoming postdoctoral grants. Since last year we use the *MSCA Seal of Excellence* principle.
- The grant is provided to researchers who intend to pursue postdoctoral research in Estonia and have previously participated in an MSCA postdoctoral fellowship call for applications.
- The researcher can take the same project and apply for our post-doctoral grant in Estonian Research Information System (ETIS).
- ETAG does not evaluate the scientific excellence of the MSCA applications, but use the official evaluation result from the MSCA application.

ETAG NCP events & support

- **18 March, 19 March:** Info days (in Estonian and in English)
- **May:** Series of webinars
- **Questions, consultation** – any time before the deadline:
kristin.kraav@etag.ee; 501 3482; skype:kristinkraav
- **Pre-screening of the proposal** – (sufficiently early) before the call
deadline: kristin.kraav@etag.ee